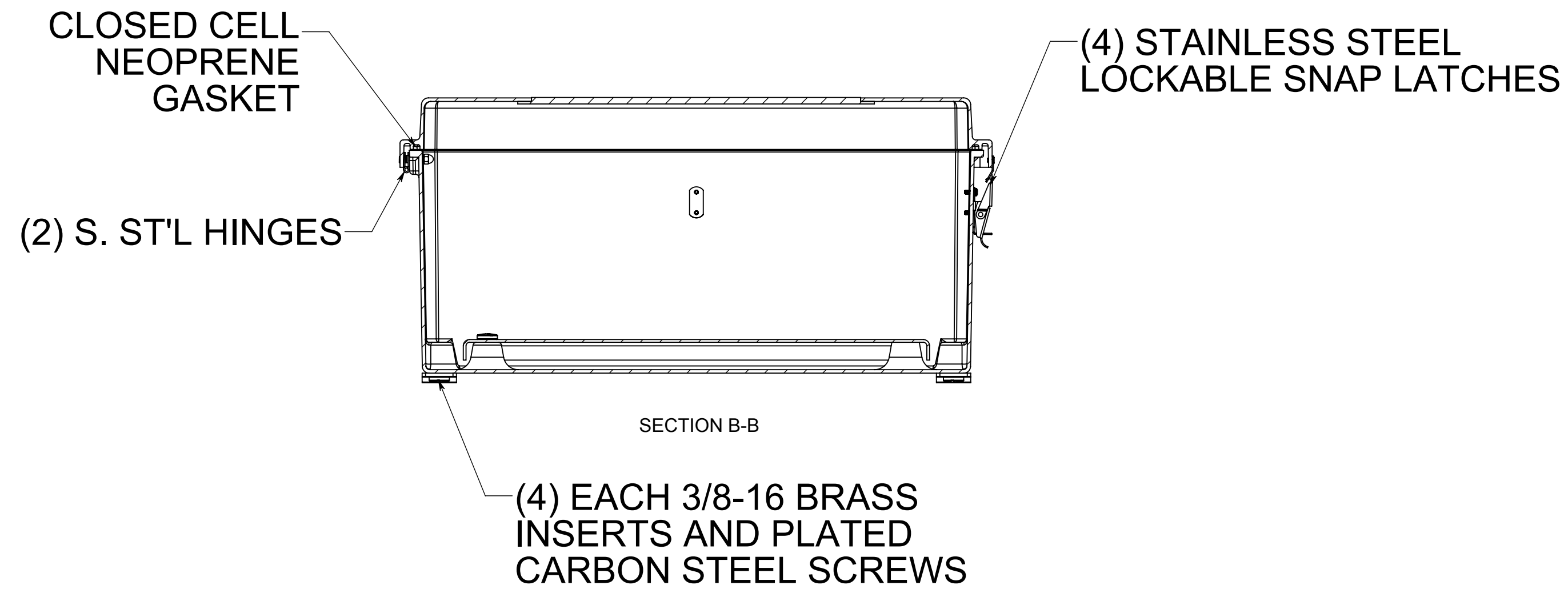
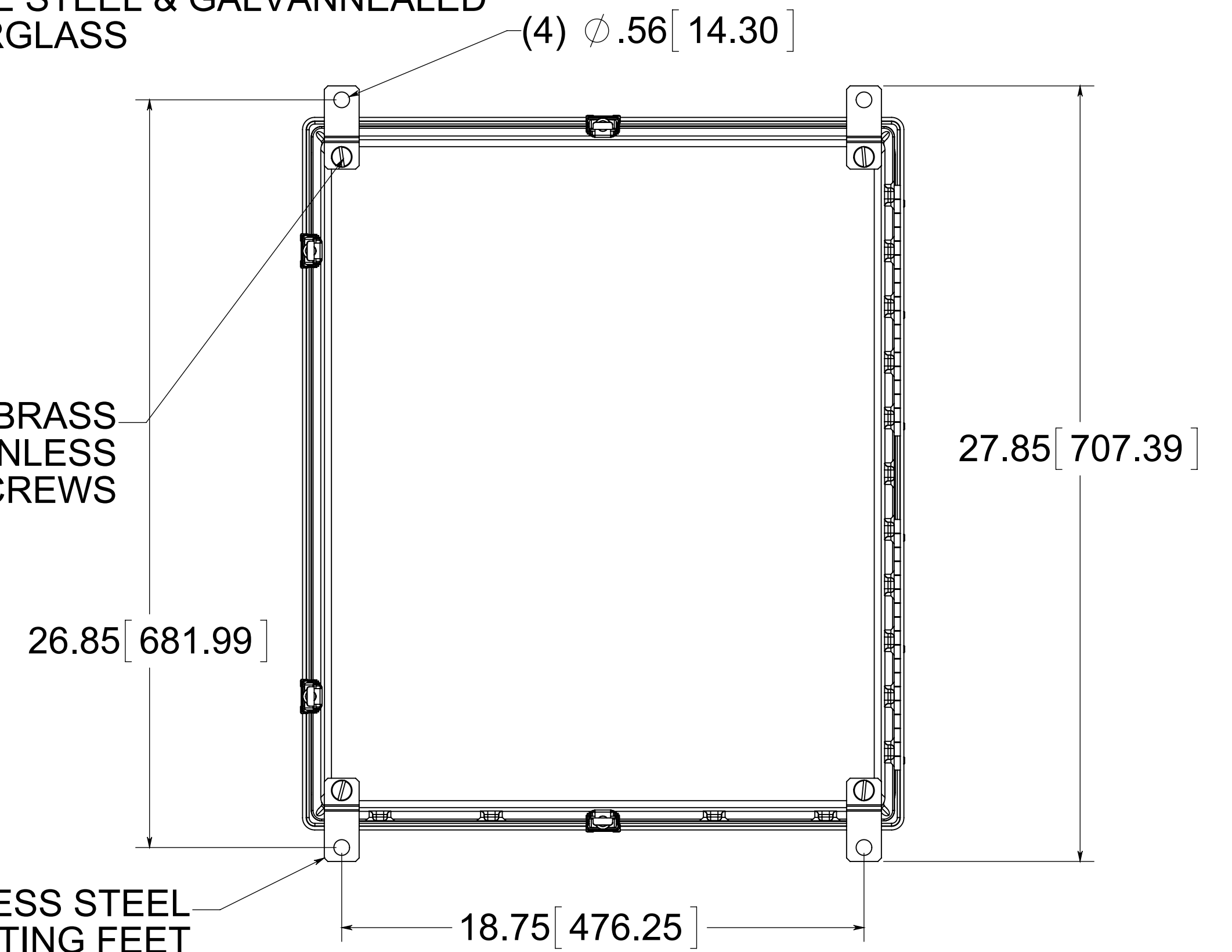


OPTIONAL BACK PANEL SHOWN
0.100 [2.54] TH'K- ALUMINUM
0.075 [1.91] TH'K- WHITE STEEL & GALVANNEALED
0.250 [6.35] TH'K- FIBERGLASS

(4) EACH 3/8-16 BRASS
INSERTS, AND STAINLESS
STEEL FEET SCREWS

(4) STAINLESS STEEL
MOUNTING FEET



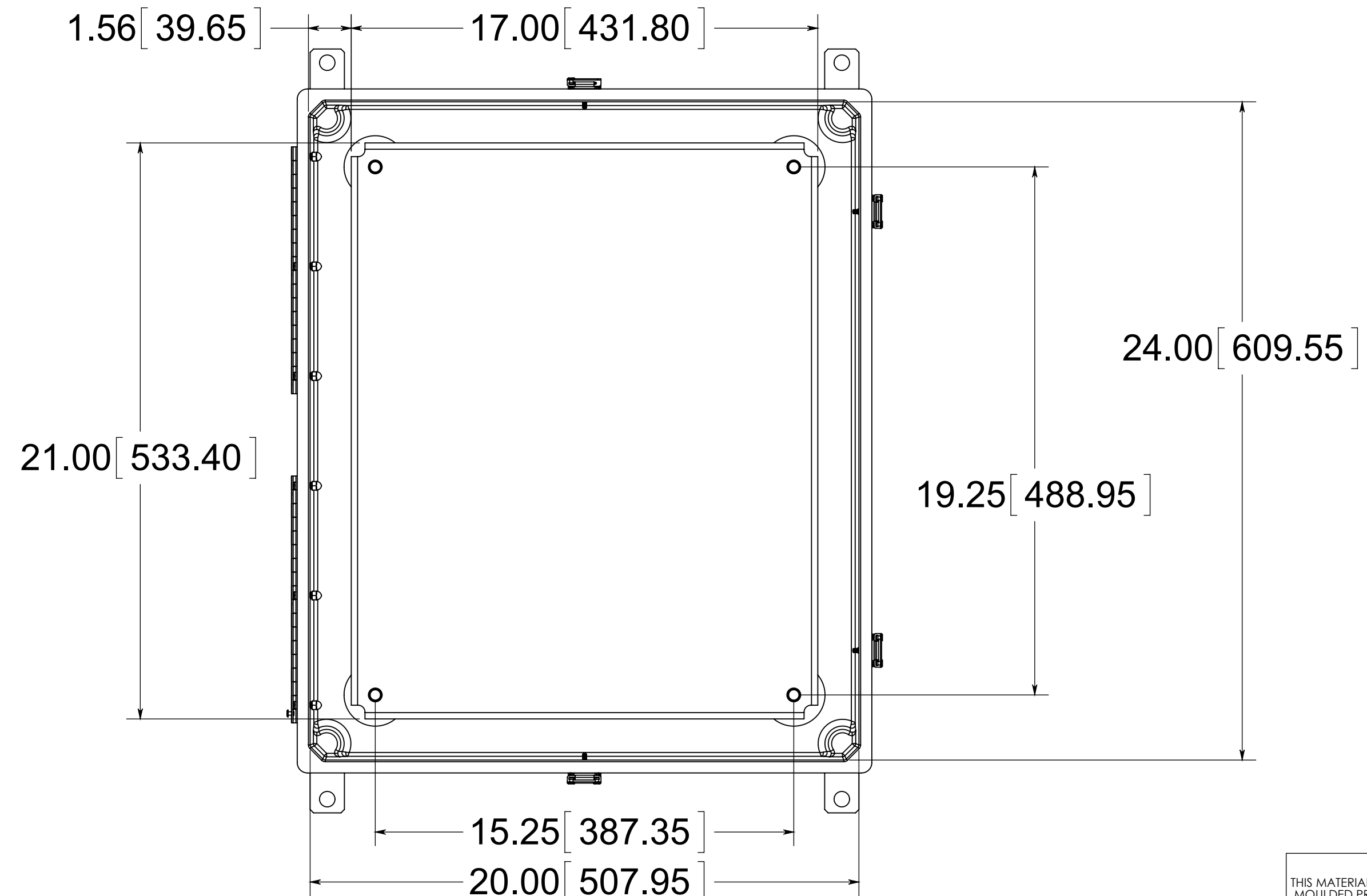
CLOSED CELL
NEOPRENE
GASKET

(2) S. ST'L HINGES

(4) STAINLESS STEEL
LOCKABLE SNAP LATCHES

(4) EACH 3/8-16 BRASS
INSERTS AND PLATED
CARBON STEEL SCREWS

FRONT VIEW
WITH COVER REMOVED
AND BACK PANEL SHOWN



MATERIAL:
BOX- COMPRESSION MOLDED FIBERGLASS REINFORCED POLYESTER
COVER- COMPRESSION MOLDED FIBERGLASS REINFORCED POLYESTER
WINDOW- POLYCARBONATE

CONFIDENTIAL
THIS MATERIAL IS OWNED BY THE ALLIED
MOULDED PRODUCTS COMPANY, IS DISCLOSED
IN CONFIDENCE, AND IS NOT TO BE REPRODUCED
OR DISTRIBUTED WITHOUT PRIOR WRITTEN
PERMISSION FROM ALLIED MOULDED PRODUCTS.



Description
AM24208RLW
Part No.
AM24208RLW