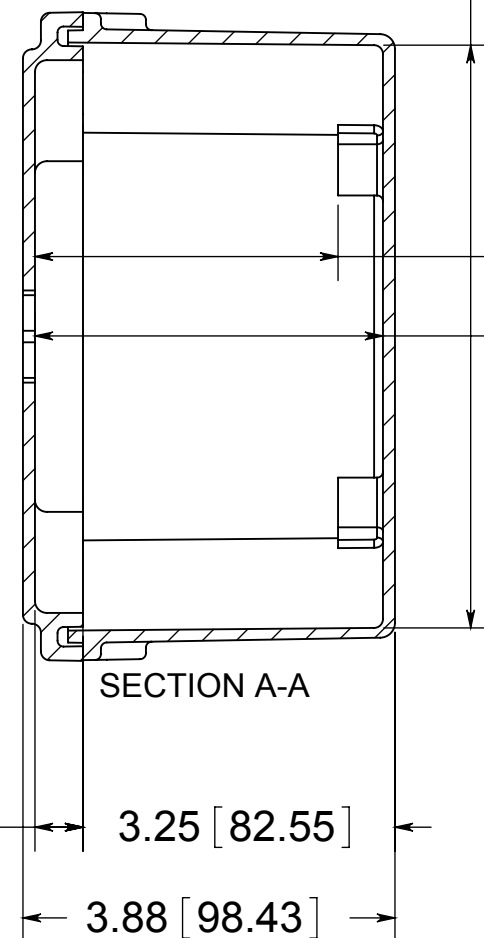
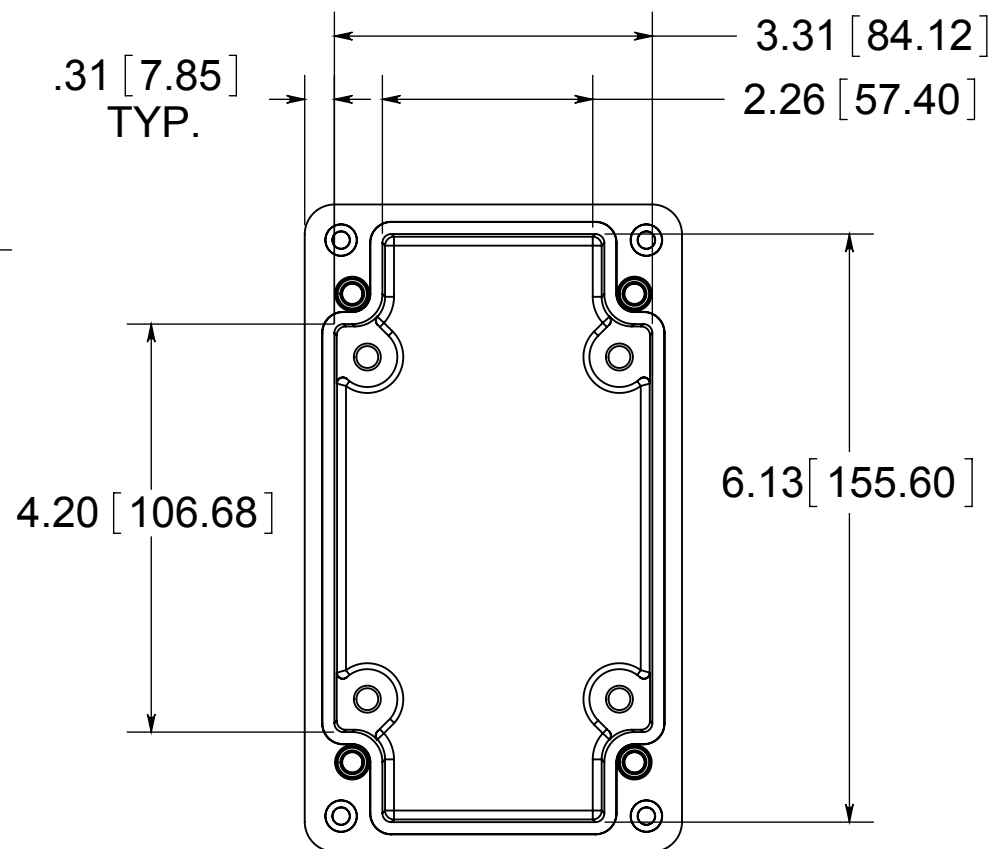


(4) EACH #10-32
BRASS INSERTS
AND STAINLESS
COVER SCREWS

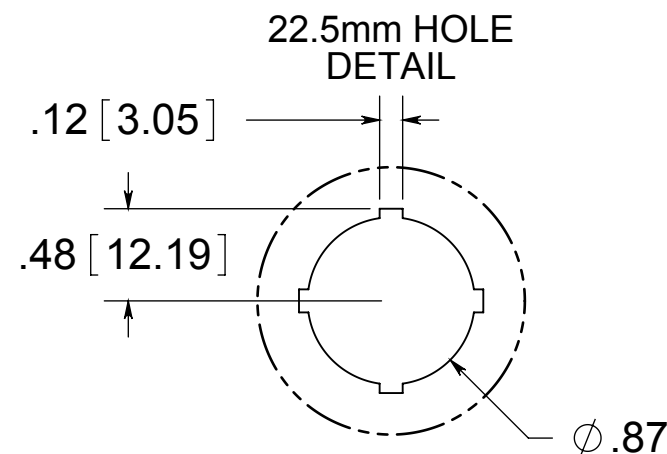
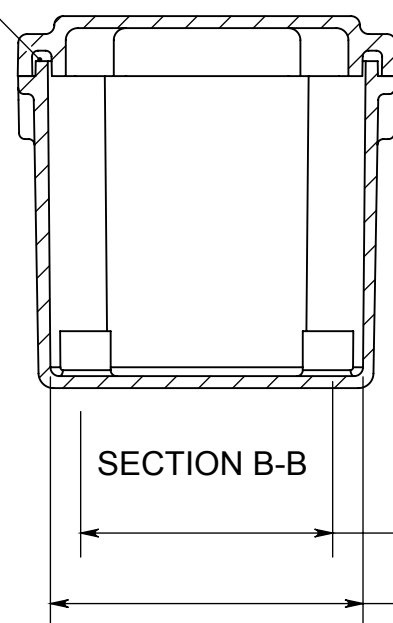


3.16 [80.19]
3.63 [92.08]

.31 [7.85]
TYP.



CLOSED CELL
NEOPRENE
GASKET



2.63 [66.68]
3.26 [82.71]



® **ALLIED MOULDED PRODUCTS**
BRYAN, OHIO
The Original Fiber Glass Outlet Box

PRODUCT SERIES

AM1PB22

Part No.

AM1PB22

CONFIDENTIAL

THIS MATERIAL IS OWNED BY THE ALLIED MOULDED
PRODUCTS COMPANY, IS DISCLOSED IN CONFIDENCE,
AND IS NOT TO BE REPRODUCED OR DISTRIBUTED
WITHOUT PRIOR WRITTEN PERMISSION FROM
ALLIED MOULDED PRODUCTS.